



THE SURVEILLANCE CENTRE



Communication with wireless peripherals

Background

- UniQcam® Pte Ltd, a Singaporean Company, was founded in 2008 and is a subsidiary of TS Australia Pty Ltd founded in 1996 (as Toshiba Electronics Representative Office for the ANZ territory).
- TS AUSTRALIA (UniQcam®) is the Patent holder of “a surveillance and recording device” and owns the UNIQCAM IP and its w/w Trademark.
- TS AUSTRALIA / UNIQCAM are promoting and selling their standalone, battery operated and low power Surveillance Systems FALCON Pro, OWL Pro Series, uniQcam® wireless Peripherals and Sensors and the UNIQCAM®/MDC Dashboard Software.
- The camera boards are produced by our contract manufacturer in Singapore, and the units are assembled and configured at TS Australia in QLD Australia and at UNIQCAM Pte Ltd in Singapore.
- The Software development of the UNIQCAM® and Remote Monitoring underwent extensive field testing which was completed end 2017.

Not the usual IP Camera System

- The patented UNIQCAM® System is the latest in **low power, standalone** security camera technology. The battery and solar operated camera captures high quality photo, video & audio - sent directly to your mobile, email and monitoring station
- The UNIQCAM® is a **portable & integrated solution** suiting even the most unconventional surveillance needs. It does not require a network, wires or mains power nor a typical installation process. This makes it ideal for easy placement in remote areas. It also allows for integration with UNIQCAM® wireless peripherals.
- The UNIQCAM® comes with **easy self-monitoring software** allowing for **remote** customised camera set up and footage can be viewed via a dashboard for independent monitoring.



Owl Pro' with or w/o Solar
Monochrome Camera

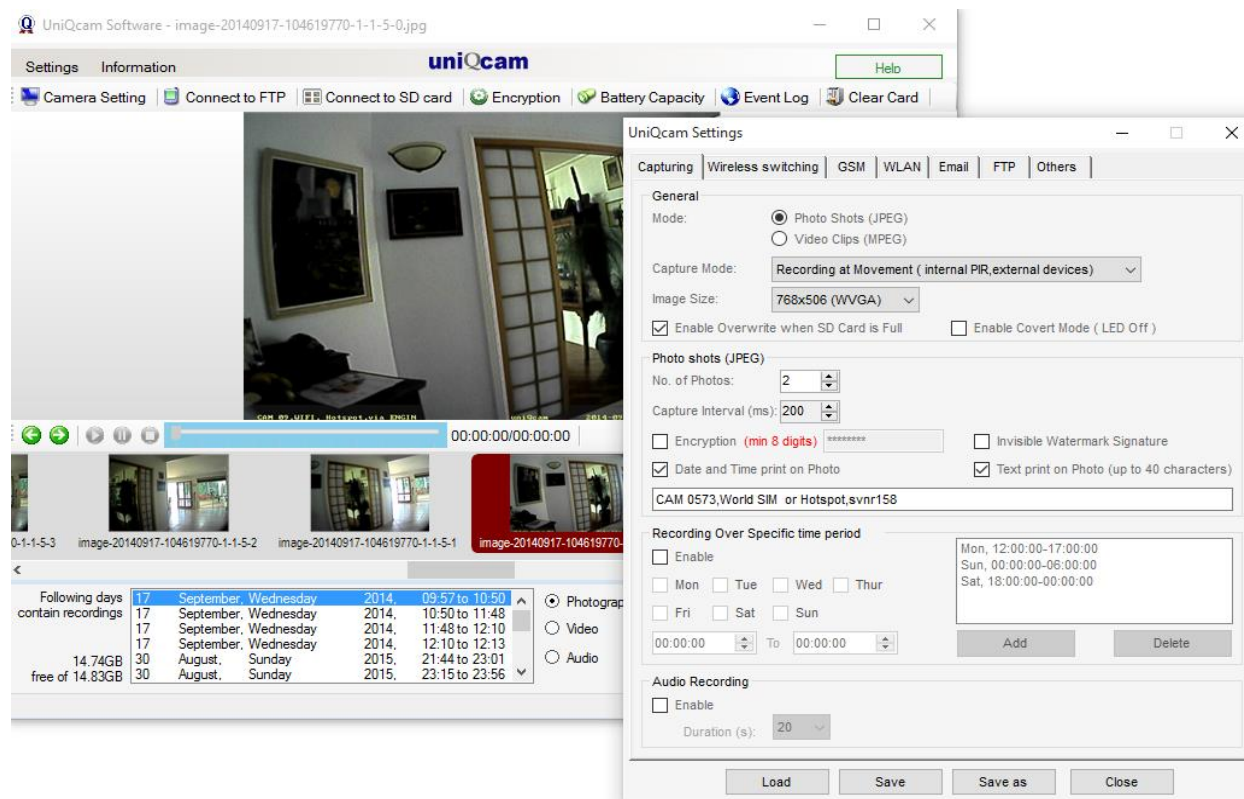
Falcon Pro' or Pro-IR with or w/o Solar
Colour Camera

The Key Features of the UniQcam

- Data Storage (internal SD card)
- 3G/4G /WLAN Transmission of Still Images, Video Clips and Audio
- Photos & Videos transmission to e-mail or FTP Server
- JEPEG, MPEG, WAV Audio recording (with integrated MIC)
- Night Vision with internal invisible IR Spotlight (940nm)
- Photo/Video/Audio Capture by internal PIR or in Time-Lapse
- Image Sensor for low light operation (3.4V/Lux-Sec) and HDR
- Time / Date Stamp on Photos
- Encryption, Watermark / Digital Signature
- Integrated wireless switch (433MHz) operating on secure “hopping” code to control external uniQcam Sensors and Devices
- Suitable as a wireless Alarm and Home Automation System
- 7 wks standby / operation power with rechargeable batteries
- The optional integrated Solar Hood or external 10W Solar panel support ongoing activity
- IP66 weatherproof case with audio vents and air ventilation

Configuration on Desktop, Smart-Phone or over UNIQCAM/MDC Web Portal

- The uniQcam® can be setup easily on the User Interface with the provided PC Software. The same can be done remotely via the UniQcam Dashboard www.camera-innovation.com



Remote Configuration

We offer a Monitoring Service with Cloud Storage to our clients where the captured footage of each camera is transmitted to PC and Smart phone in almost real time.

Cameras can be set up and updated remotely, so there is no requirement to unplug the internal SD card in order to change the camera configuration.

That means individual or groups of cameras are controlled remotely via 3G/4G /WLAN. Cameras can be configured easily on the remote Dashboard from your PC , Smart phone or Tablet.

The screenshot shows the 'Camera #UC39120032 Configuration' page. At the top, there is a navigation bar with 'myDetectionCamera', 'Dashboard', 'Setup', and 'My Account' on the left, and the 'uniQcam TECHNOLOGIES' logo on the right. Below the navigation bar, the page title is 'Camera #UC39120032 Configuration' with a breadcrumb trail 'Setup > Camera > Configuration'. A blue horizontal menu contains tabs for 'Capturing', 'Wireless Switching', 'GSM', 'WLAN', 'Email', 'FTP', 'Others', and 'Upload'. The 'Capturing' tab is active. On the left, a sidebar menu shows 'General' (selected), 'Video Clips (MPEG)', and 'Recording Over Specific time period'. The main content area displays configuration options: 'Mode' with radio buttons for 'Photo Shots (JPEG)' and 'Video Clips (MPEG)'; 'Capture Mode' with a dropdown menu set to 'Recording at Movement (internal PIR, external devices)'; 'Image Size' with a dropdown menu set to '640x480 (VGA)'; and two checkboxes: 'Enable Overwrite when SD Card is Full' (checked) and 'Enable Covert Mode (LED Off)' (unchecked). At the bottom, there are two buttons: 'Submit Configuration' (green) and 'Submit and Deploy' (blue).

UNIQCAM® / MDC Dashboard

← → ↻ 🏠 ⓘ Not secure | www.camera-innovation.com/multimedias?page=27 ☆ ⓘ

📱 Apps 🌐 cPanel Login 📄 New Tab 🖨️ Hypnosis helps chr... 📧 Inbox (14) - unica...

🏠 myDetectionCamera 🏠 Dashboard ⚙️ Setup 👤 My Account **uniQcam**
TECHNOLOGIES

📷 Captures

Select Location: RSL Care-Sapphire Resort HERVEY BAY 2, Beachside, Test Location
Select Camera: MDC Test, MDC Test 2, Sekisui 8
Select Capture Type: image, video
Start Date: 00:00 End Date: 23:59 [Filter](#)

Select Action [GO](#)

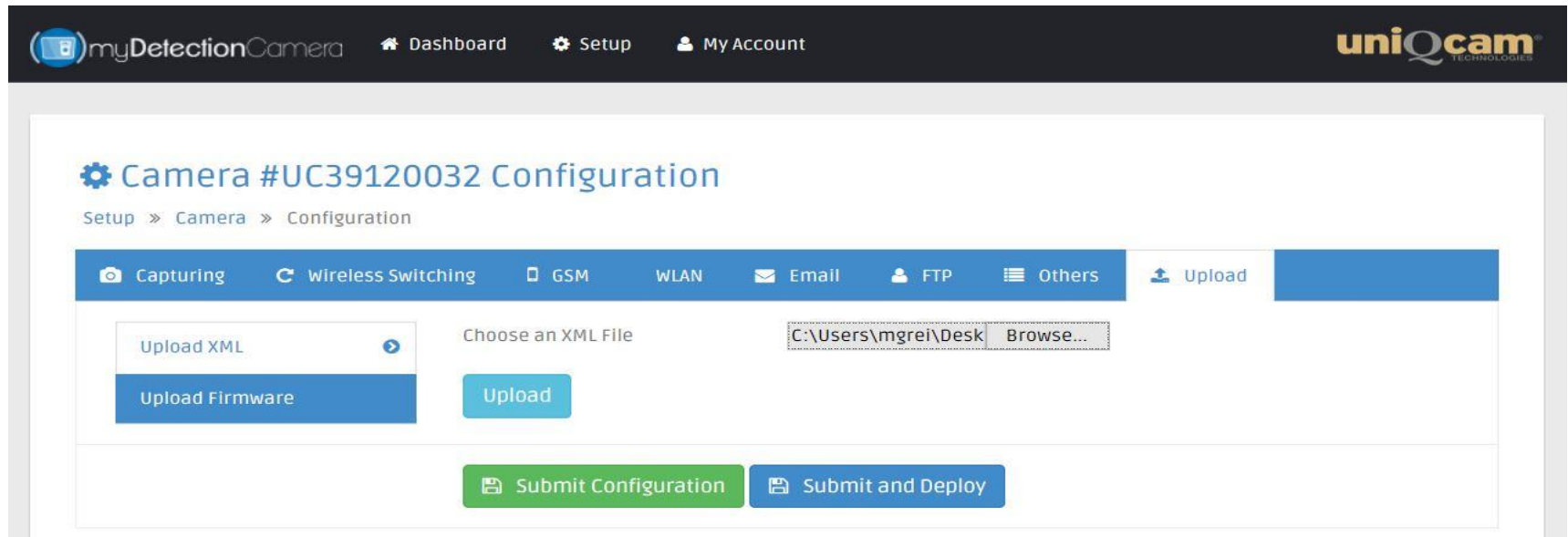
All	Type	File Name	Location	Camera	Thumbnail	Size (bytes)	Created at	Action
<input type="checkbox"/>		/home/uniqcam/UC39120592/20190316_1/image-20190316-124445750-1-1-2-1.jpg	Aetos Location	AETOS Demo Falcon Pro White		87849	2019-03-16 12:45:54	View Download
<input type="checkbox"/>		/home/uniqcam/UC19120565/20190315_1/video-20190315-164141110-1-1.mp4	Ward Street Site	WARD ST CAM 12b		1384279	2019-03-15 16:42:43	Play Download
<input type="checkbox"/>		/home/uniqcam/UC19120565/UC19120565/heartbeat Heartbeat ->-	Ward Street Site	WARD ST CAM 12b	UNKNOWN	2	2019-03-15 16:37:09	Play Download
<input type="checkbox"/>		/home/uniqcam/UC3912589/20190315_2/video-20190315-135933810-1-1.mp4	RSL Care-Sapphire Resort HERVEY BAY 2	FALCON PRO-BRIDGE		698551	2019-03-15 14:01:26	Play Download
<input type="checkbox"/>		/home/uniqcam/UC3912589/20190315_1/video-20190315-11103220-1-1.mp4	RSL Care-Sapphire Resort HERVEY BAY 2	FALCON PRO-BRIDGE		708293	2019-03-15 11:12:39	Play Download
<input type="checkbox"/>		/home/uniqcam/UC39120595/20190315_1/video-20190315-104048350-1-1.mp4	Aetos Location	AETOS Demo Falcon Pro Black		1418883	2019-03-15 10:43:17	Play Download

Central Viewing

Remote Configuration & Update

Remote Monitoring of various Cameras in their Locations

UNIQCAM® / MDC Dashboard



myDetectionCamera Dashboard Setup My Account uniQcam TECHNOLOGIES

Camera #UC39120032 Configuration

Setup » Camera » Configuration

Capturing Wireless Switching GSM WLAN Email FTP Others Upload

Upload XML Choose an XML File C:\Users\mgrei\Desk Browse...

Upload Firmware Upload

Submit Configuration Submit and Deploy

Remote Configuration of Cameras via Dashboard

UniQcam® / MDC

Dashboard:

All cameras at a certain location can be viewed on the Dashboard screen in almost real time.

Example:

Camera 4 – Video clip (10Sec)

Location: Swimming Pool

Camera 5 – Photo Shot of a car

Location: Driveway

Camera 1 – Photo Shot of Foyer

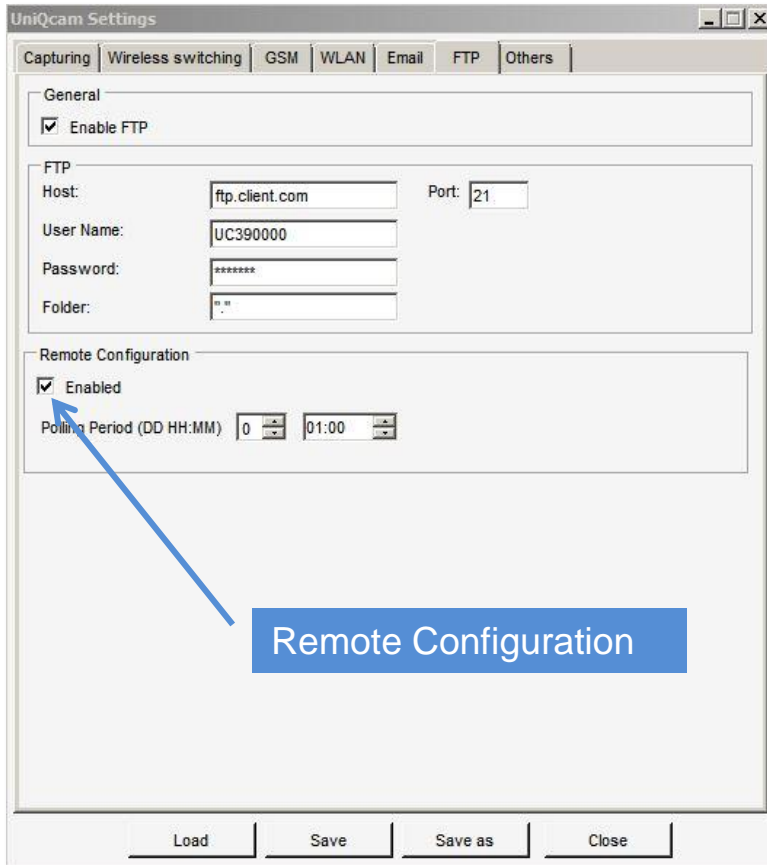
Location: Building entrance

All the footage here is captured in “PIR Mode” but cameras could also operate in “Time Lapse Mode”.

File Name	Location	Camera	Thumbnail	File ID	Date/Time	Actions
2-0.jpg	BAY					Download
video-20160810-081633120-1-1.mp4		Camera 6		1495669	2016-08-10 08:11:41	Play, Download
image-20160415-054305450-1-1-2-1.jpg		Camera 5		58746	2016-08-10 07:58:38	View, Download
image-20160415-054305450-1-1-2-0.jpg		Camera 5		55002	2016-08-10 07:58:34	View, Download
image-20160415-054301110-1-1-2-1.jpg		Camera 5		54676	2016-08-10 07:58:16	View, Download
image-20160415-054301110-1-1-2-0.jpg		Camera 5		54784	2016-08-10 07:58:12	View
image-20160810-075800940-1-1-2-1.jpg		Camera 1				
image-	...	Camera				

Click thumbnail to enlarge

UNIQCAM[®] User Interface Settings



UNIQCAM® Applications



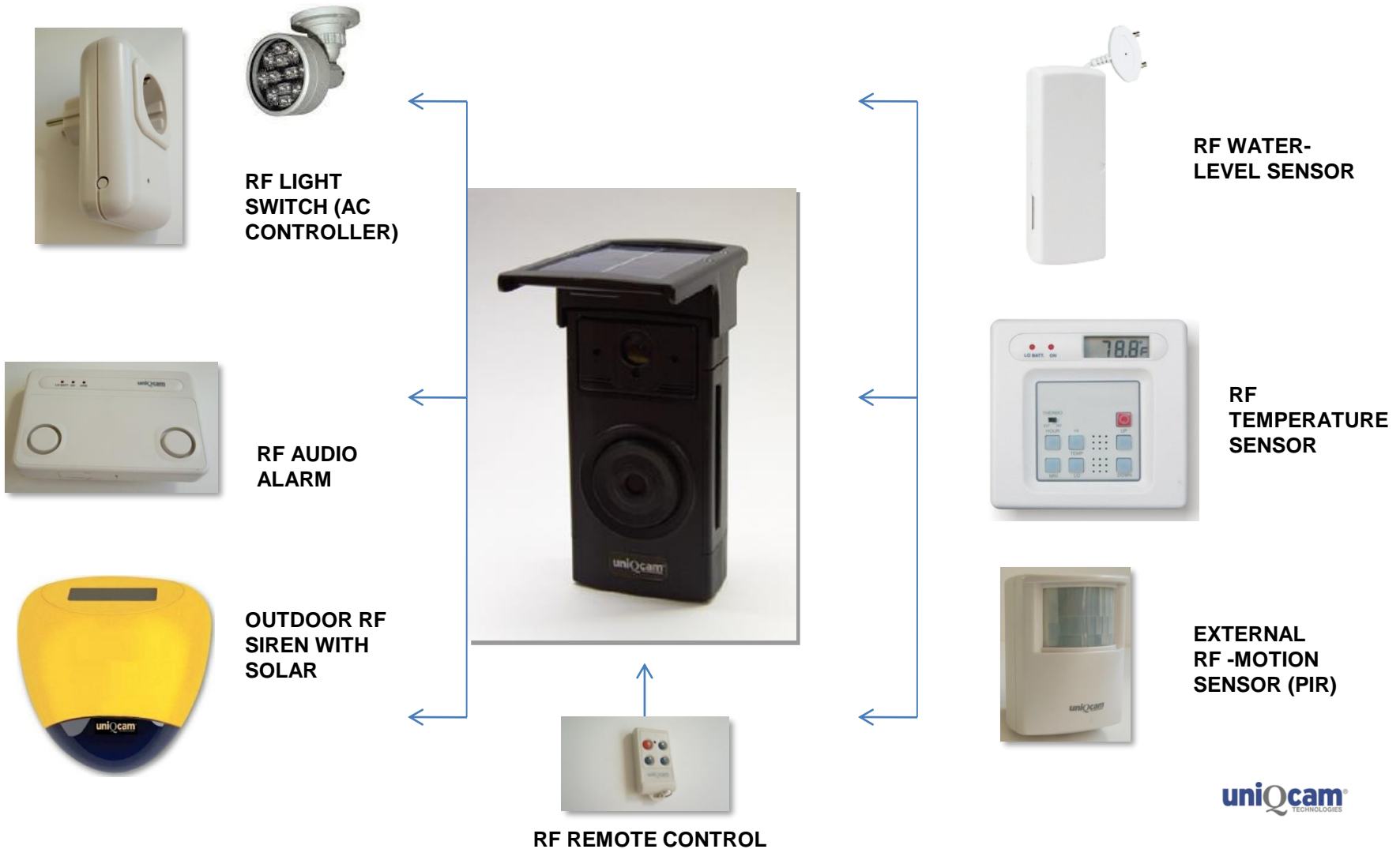
Construction Sites	Marine	Council, Government & Police	Airports & Hotels
<p>The uniQcam® has been installed on building sites where in many cases there is no access to mains power, or where cameras needed to be frequently moved between locations.</p>	<p>The uniQcam® comes with a marine certified IP66 case. It's suitable for marine application (jetty, boats, ship yard) with it's wireless external devices and sensors – with easy installation no drilling or cables are required.</p>	<p>The uniQcam® can be applied to public areas for Government surveillance requirements – such as vandalism, fly tipping, hooliganism and terrorism.</p>	<p>Dead spot areas where network cameras are not installed or where established cameras should be monitored are ideal situations for the placement of a uniQcam®. Application such as baggage/cargo, areas and hotel storage rooms .</p>

UNIQCAM® Applications



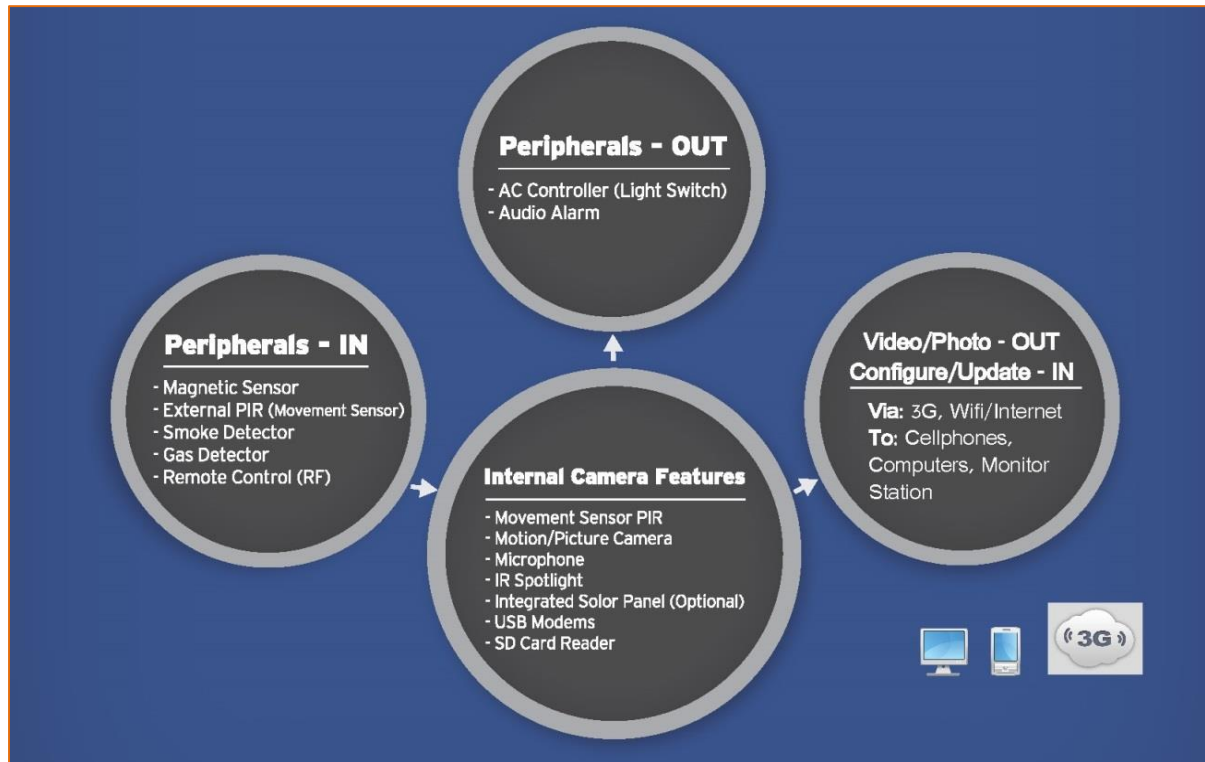
Correctional Services	Farms & Remote Locations	Retail & Warehouse	Home
<p>The uniQcam® can be used to support correctional services through monitoring non-patrolled areas. For drug trafficking control and other unlawful activities in the prison environment.</p>	<p>Perfect for remote locations with the inclusion of the Solar Panel, the uniQcam® is ideal for farms and livestock monitoring. In addition, the IP66 case is fine dust proof which makes it particularly applicable to Mines and areas that are prone to explosion risk - Gas & Oil tanks & Traffic areas.</p>	<p>Surveillance of shops (dead spots), stores, warehouses, parking areas, money counting rooms, also watch over established network cameras in distribution centres.</p>	<p>uniQcam® has been implemented in private households where the camera is used for Security, as an Alarm System and for multiple surveillance purposes (e.g. children's rooms, driveways, front and rear house entrance, garden areas etc.)</p>

UNIQCAM® Wireless Switching – RX/TX

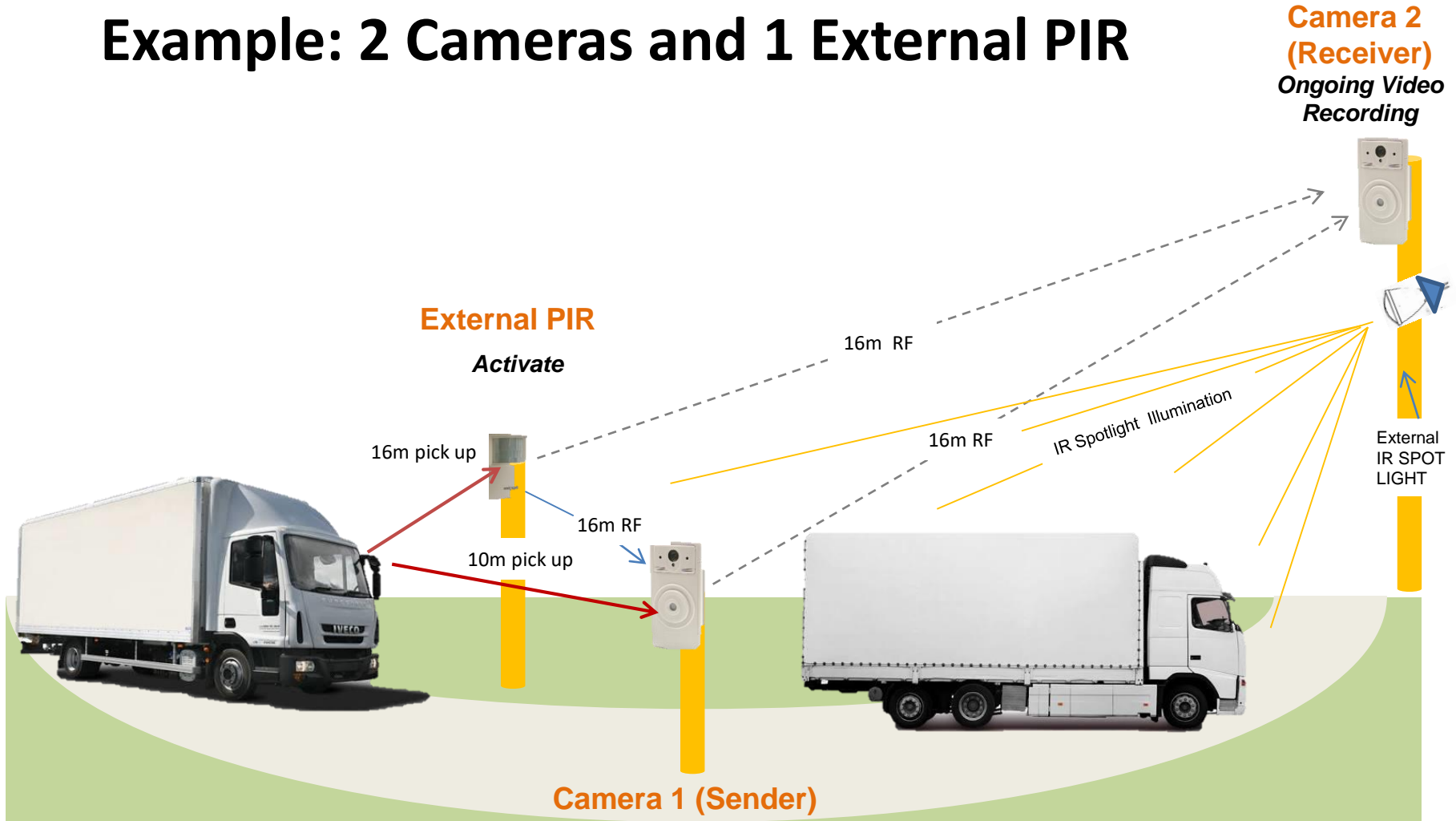


UNIQCAM® The Communication Centre

- The UNIQCAM® has an **integrated control centre** where UNIQCAM® external devices can be switched wirelessly in receiving and transmitting mode (Rx/Tx). E.g. UNIQCAM® Door Sensor (Peripheral IN) UNIQCAM® Alarm Panel or Light Switch (Peripheral OUT).



Example: 2 Cameras and 1 External PIR



Activate, Capture & Send to email or UNIQCAM / MDC Dashboard



UNIQCAM® Cameras

Version 1A

No RF Module/ Optional 3G



Model Variants:
 GUARD DOG
 (UC-C00-A-WA0-00)
 GUARD DOG-IR
 (UC-C90-A-WA0-00)
 OWL-IR
 (UC-M90-A-WA0-00)

Version 1B

No RF Module / 3G included



Model Variants:
 FALCON PRO
 (UC-C00-A-WA0-G0)
 FALCON PRO-IR
 (UC-C90-A-WA0-G0)
 OWL PRO-IR
 (UC-M90-A-WA0-G0)

Camera	RF Module	3G	SD Card	Software	Accessories	Remote Control	Manuals	Options Case: Cream or Black	Wifi Modem	Solar Hood	Options: Sensors/Devices
Version 1A	X	Option	✓	✓	✓	X	✓	✓	Option	Option	X
Version 1B	X	✓	✓	✓	✓	X	✓	✓	Option	Option	X

UNIQCAM® Cameras

Version 2

Complete with RF Module, 3G included



Model Variants:

- FALCON PRO – CR (UC-C00-CR-A-WA0-G0)
- FALCON PRO-IR-CR (UC-C90-CR-A-WA0-G0)
- OWL PRO-IR-CR (UC-M90-CR-A-WA0-G0)

Options:

- Case – Cream or Black / Solar Hood / Wifi Modem
- RF Peripherals: Audio Alarm, AC Controller (Light Switch), Door/Window Sensor, Water Level Sensor, Wristband Panic Button, Temperature Sensor, External PIR- outdoor (12m detection range), Outdoor Siren, Strobe with Solar panel, 4 button RF Remote Control (Arm, Disarm, Battery check, Photo-Shot/Panic Button).

Camera	RF Module	3G	SD Card	SoftWare	Accessories	Remote Control	Manuals	Options Case: Cream or Black	Wifi Modem	Solar Hood	Options: Sensors/Devices
Version 2	✓	✓	✓	✓	✓	✓	✓	✓	Option	Option	Option

UNIQCAM® Cameras + Solar Bundles

Version 1 or 2 + BASIC Solar Bundle

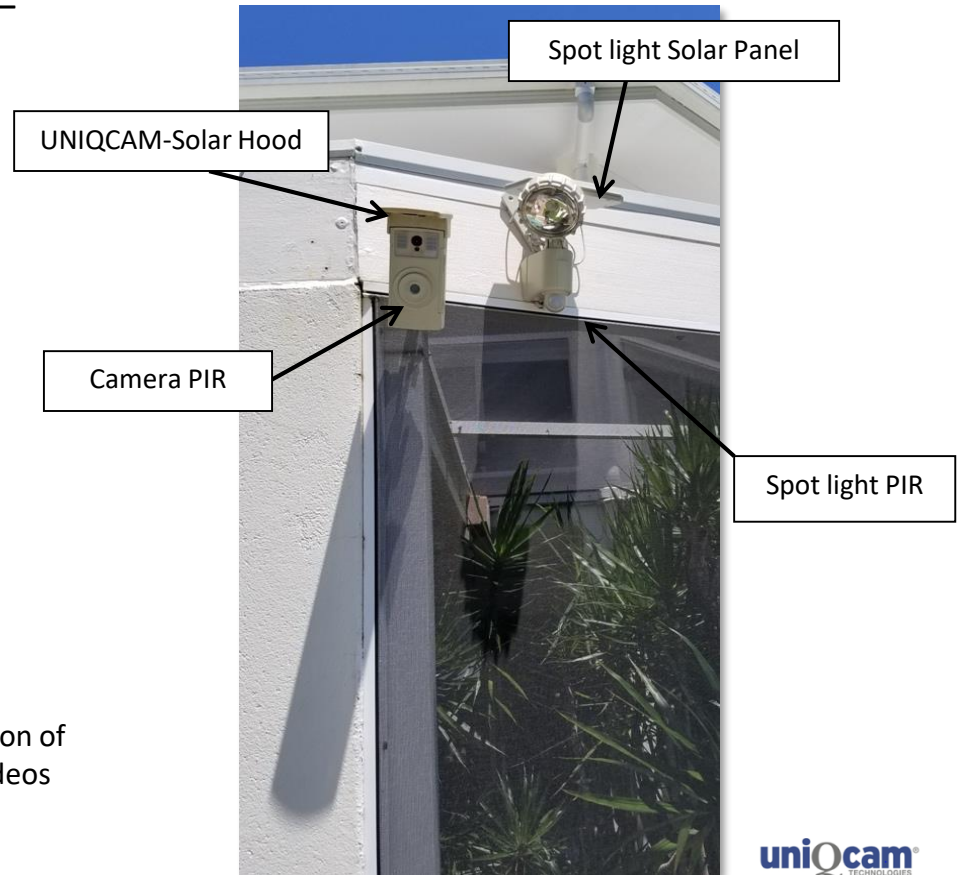
Bundle with external SOLAR Rechargeable Sensor Spotlight – UC-SPEX-SPI

- LED 500 Lumens
- 180 degree adjustable hinge
- PIR with 180 degree swivel
- Rear mount
- Lighting mode settings / day & night settings
- Solar panel with bracket
- 6V Li-Ion battery
- Recommended for high traffic areas

In combination with following cameras:
 FALCON PRO – CR (UC-C00-CR-A-WA0-G0)
 OWL PRO- CR (UC-M90-CR-A-WA0-G0)

Bundle is designed to be cost effective with easy setup – customers can use their own PIR Spotlight.

In summary, camera battery will last longer with the integration of our larger external Solar Panel. Meaning more photos and videos can be captured, stored and transmitted.

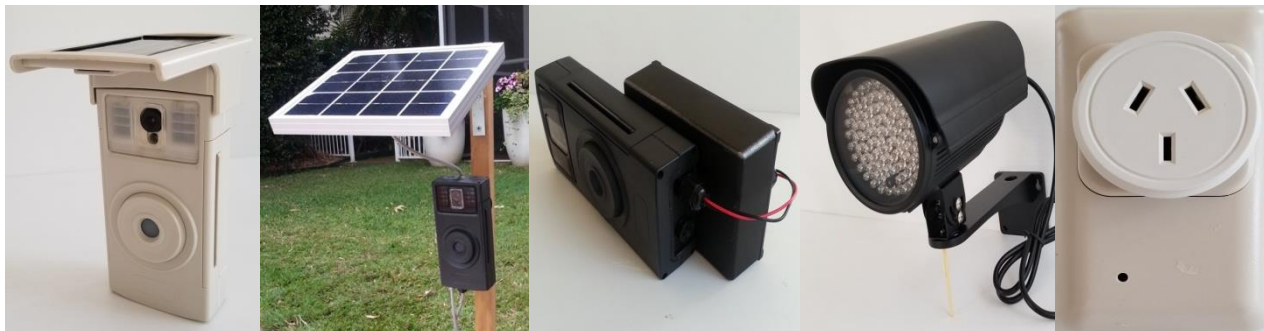


UNIQCAM[®] Cameras + Solar Bundles

Version 2 – Bundle B1

Camera with IR and RF- AC Controller (Light Switch) - 240V

Options/Additions:



<p>1. Attached Solar Hood (UC-SOLA-W0S) - 0.7W</p>	<p>2. External Solar Panel (UC-SOEX-6V7) – 7.5 W</p>	<p>3. External Li-Ion Pack (UC-BPEX-12A) – 12A/h</p>	<p>4. External IR light 12V DC (UC-VIRO-170) - 104 diodes</p>	<p>5. AC Controller (RF) for ext. IR Spot (240 V) - 40m RF range</p>
--	--	--	---	--

Available on Model Variants:
 FALCON PRO-IR-CR
 (UC-C90-CR-A-WA0-G0)
 OWL PRO-IR-CR
 (UC-M90-CR-A-WA0-G0)

UNIQCAM® Cameras + Solar Bundles (Applications)

4

Version 2 – Bundle B2

Camera with 940 nm IR and ext.IR Spotlight - completely battery operated - 6V/ 12V DC

Options/Additions:



1. Attached Solar Hood – 0.7W (UC-SOLA-W0S), internal IR Spotlight (940nm) – range up to 5m



2. External Solar Panel (UC-SOEX-6V7)- 7.5W, 6V

➤ Cable to camera with IR spotlight



3. External Battery Pack 12A/Hr & Controller Board -IR (940 nm) range up to 30m



4. External IR spotlight 12V DC -- 940nm – (UC-VIRO-IR) range up to 30m

Available on Model Variants:

FALCON PRO-IR-CR
(UC-C90-CR-B-WA0-G0)
OWL PRO-IR-CR
(UC-C00-CR-B-WA0-G0)

The weight of the whole unit item 4 (Camera, IR spot light, solar panel and Li-Ion battery pack) with controller unit is only 3500grams.

UNIQCAM® Cameras + Solar Bundles

UNIQCAM VERSIONS / APPLICATION REQUIREMENTS - RECOMMENDATIONS												Jan-18
APPLICATION	VERSION REFERENCE	Guard-Dog	Falcon-Pro	Falcon-Pro-IR	Owl-Pro-IR	3G-Modem	WIFI-Modem	RF-Modem	Solar-Hood	Solar-external	add Battery Solar/Spotlight	DC Contr. Lightswitch
① carry camera on world travel, holiday home, watch your property, etc.	Ver: A1 Page ①	√	√	√	√	(v)	(v) pers. hotspot					
② surveillance - Intruder in remote areas, occasional events	Ver: A1/2 Page ① ②		√	√	√	√	(v)	(v)	√	(v) if requ.	(v) ext.Spot- Light if requ.	
③ surveillance - Traffic remote areas, more events	Ver: A 2 Page ① ②		√	√	√	√		√		√	(v) piggy back Batt. , if requ.	
④ surveillance with Night Vision - of larger areas wireless AC Contr.requires 240 V, or inverter to 12VDC	Ver: B 2 Page ③			√	√	√	(v)	√		√	(v) does not require add piggy back Batt	√
⑤ surveillance with Night Vision - for large areas fully batter/solar operated	Ver: B 2 Page ④		√	√	√	√		√		√	√	
NOTES: (v) = optional -- above are recommendations; other combinations can be arranged.												